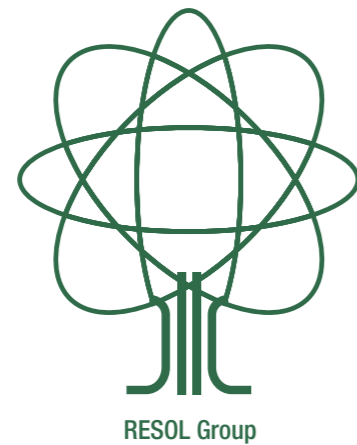


**Bringing more smiles to you
on your time off.**

We contribute to a bright society by providing support
for a life worth living, bonds, health promotion,
and relaxation through innovative ideas and initiatives.



Company Overview

Business Name	RESOL HOLDINGS Co., Ltd.
Established	February 27, 1931
Capital	JPY 3,948,088,000
Shares	Total number of authorized shares: 8,000,000 Total number of issued shares: 5,564,200 Number of shareholders: 10,306 (as of March 31, 2023) Stock listing: Prime Market of Tokyo Stock Exchange, Code No. 5261 (as of April 4, 2023)
Number of Employees	Group employees: 1,694 (as of March 31, 2023)
Headquarters	6-24-1 Nishi-shinjuku, Shinjuku-ku, Tokyo 160-0023 Japan Tel: +81-3-3344-8811 (main number)
Main Business	<ul style="list-style-type: none"> Hotel operations business
Activities	<ul style="list-style-type: none"> Golf operations business RESOL NO MORI (CCRC) Welfare business Renewable energy business Investment recovery business

Main Group	RESOL Co., Ltd.
Companies	RESOL NO MORI Co., Ltd. RESOL LIFE SUPPORT Co., Ltd. RESOL GENERAL RESEARCH INSTITUTE Co., Ltd. RESOL REAL ESTATE Co., Ltd. * For other RESOL Group companies, please refer to our annual securities report.

Organization (Directors, Auditors, Executive Officers)

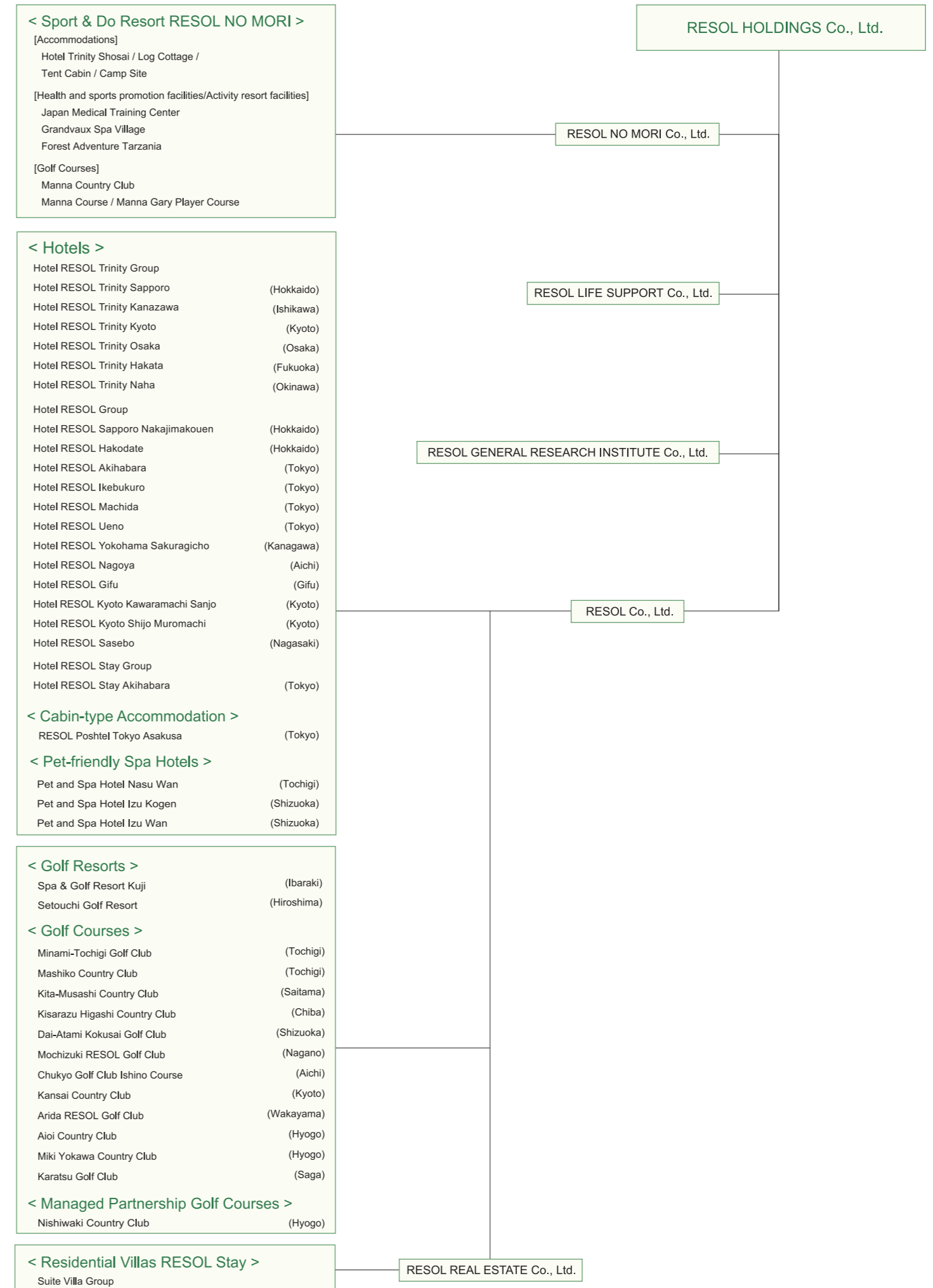
Representative Director, Chairman	Hideaki Hirata Chairman of the Board of Directors Chairman of RESOL REAL ESTATE Co., Ltd.	Full-time Auditor	Kiyoshi Iwaba
Representative Director, President	Masaru Osawa Responsible for overall Group's management Chairman of the Group Management Liaison Committee Responsible for management planning In charge of the internal audit President of Chukyo Golf Club Co., Ltd. Chairman of RESOL Life Support Co., Ltd.	External Auditor	Hirofumi Ito
Director Managing Executive Officer	Tadashi Hoshino Responsible for Group Public Relations and IR	External Auditor	Manabu Mizutani
Director Executive Officer	Yasuji Kojima Responsible for general affairs In charge of the accounting	Group Senior Executive Officer	Hiroyuki Miyano President of RESOL General Research Institute Co., Ltd.
Outside Director	Yutaka Kawamura	Group Senior Executive Officer	Naoto Sano President of RESOL Co., Ltd.
Outside Director	Kimihiko Higashio	Group Executive Officer	Yuki Soya President of RESOL no Mori Co., Ltd.
		Group Executive Officer	Shigehito Saji President of JG Kuji Co., Ltd. President of Dai-Atami Kokusai Golf Club Co., Ltd. President of Setouchi Golf Resort Co., Ltd. *The description of the posts held in other Group's companies is omitted.
		Group Executive Officer	Hideyuki Tanaka President of RESOL Life Support Co., Ltd.

Major Shareholders	Shareholder	Shares held	Percentage held, excluding treasury stocks (%)
	Mitsui Fudosan Co., Ltd.	2,279,200	41.02
	Konami Group Corporation	1,132,900	20.39
	The Master Trust Bank of Japan, Ltd. (retirement benefits trust account/Misawa Homes account)	342,000	6.15
	The Master Trust Bank of Japan, Ltd. (trust account)	115,200	2.07
	RESOL Group client stock ownership	88,300	1.58
	SMBC Nikko Securities Inc.	59,400	1.06
	Custody Bank of Japan, Ltd.(trust account 4)	56,000	1.00
	JPMorgan Securities Japan Co., Ltd.	30,002	0.54
	Custody Bank of Japan, Ltd.(trust account)	23,100	0.41
	Nomura Securities Co., Ltd.	14,001	0.25

* The percentage of stock held excludes treasury stocks (8,840 shares).
(as of March 31, 2023)

Acquired Licenses	Real Estate Transaction License	Governor of Tokyo (2) No. 100051
	Travel Business Registration	Japan Tourism Agency Commissioner Registration, Travel Business No. 1177

[Organization Chart]



* As of June 29, 2023, if not specifically stated.